



PROJECT TRASDEM:

Empowerment of social dialogue in trade sector as a contribution to the overarching EU employment and social policy challenges

International workshop /project meeting of project partners

Barcelona, Spain
3. June – 4. June 2013



Overview - the spring 2013 forecast

	Real GDP Spring 2013 forecast				Inflation Spring 2013 forecast				Unemployment rate Spring 2013 forecast			
	2011	2012	2013	2014	2011	2012	2013	2014	2011	2012	2013	2014
Belgium	1.8	-0.2	0.0	1.2	3.4	2.6	1.3	1.6	7.2	7.6	8.0	8.0
Germany	3.0	0.7	0.4	1.8	2.5	2.1	1.8	1.6	5.9	5.5	5.4	5.3
Estonia	8.3	3.2	3.0	4.0	5.1	4.2	3.6	3.1	12.5	10.2	9.7	9.0
Ireland	1.4	0.9	1.1	2.2	1.2	1.9	1.3	1.3	14.7	14.7	14.2	13.7
Greece	-7.1	-6.4	-4.2	0.6	3.1	1.0	-0.8	-0.4	17.7	24.3	27.0	26.0
Spain	0.4	-1.4	-1.5	0.9	3.1	2.4	1.5	0.8	21.7	25.0	27.0	26.4
France	1.7	0.0	-0.1	1.1	2.3	2.2	1.2	1.7	9.6	10.2	10.6	10.9
Italy	0.4	-2.4	-1.3	0.7	2.9	3.3	1.6	1.5	8.4	10.7	11.8	12.2
Cyprus	0.5	-2.4	-8.7	-3.9	3.5	3.1	1.0	1.2	7.9	11.9	15.5	16.9
Luxembourg	1.7	0.3	0.8	1.6	3.7	2.9	1.9	1.7	4.8	5.1	5.5	5.8
Malta	1.7	0.8	1.4	1.8	2.5	3.2	1.9	1.9	6.5	6.4	6.3	6.1
Netherlands	1.0	-1.0	-0.8	0.9	2.5	2.8	2.8	1.5	4.4	5.3	6.9	7.2
Austria	2.7	0.8	0.6	1.8	3.6	2.6	2.0	1.8	4.2	4.3	4.7	4.7
Portugal	-1.6	-3.2	-2.3	0.6	3.6	2.8	0.7	1.0	12.9	15.9	18.3	18.6
Slovenia	0.6	-2.3	-2.0	-0.1	2.1	2.8	2.2	1.4	8.2	8.9	10.0	10.3
Slovakia	3.2	2.0	1.0	2.8	4.1	3.7	1.9	2.0	13.6	14.0	14.5	14.1
Finland	2.8	-0.2	0.3	1.0	3.3	3.2	2.4	2.2	7.8	7.7	8.1	8.0
Euro area	1.4	-0.6	-0.4	1.2	2.7	2.5	1.6	1.5	10.2	11.4	12.2	12.1
Bulgaria	1.8	0.8	0.9	1.7	3.4	2.4	2.0	2.6	11.3	12.3	12.5	12.4
Czech Republic	1.9	-1.3	-0.4	1.6	2.1	3.5	1.9	1.2	6.7	7.0	7.5	7.4
Denmark	1.1	-0.5	0.7	1.7	2.7	2.4	1.1	1.6	7.6	7.5	7.7	7.6
Latvia	5.5	5.6	3.8	4.1	4.2	2.3	1.4	2.1	16.2	14.9	13.7	12.2
Lithuania	5.9	3.6	3.1	3.6	4.1	3.2	2.1	2.7	15.3	13.3	11.8	10.5
Hungary	1.6	-1.7	0.2	1.4	3.9	5.7	2.6	3.1	10.9	10.9	11.4	11.5
Poland	4.5	1.9	1.1	2.2	3.9	3.7	1.4	2.0	9.7	10.1	10.9	11.4
Romania	2.2	0.7	1.6	2.2	5.8	3.4	4.3	3.1	7.4	7.0	6.9	6.8
Sweden	3.7	0.8	1.5	2.5	1.4	0.9	0.9	1.4	7.8	8.0	8.3	8.1
United Kingdom	1.0	0.3	0.6	1.7	4.5	2.8	2.8	2.5	8.0	7.9	8.0	7.9
EU	1.6	-0.3	-0.1	1.4	3.1	2.6	1.8	1.7	9.7	10.5	11.1	11.1
Croatia	0.0	-2.0	-1.0	0.2	2.2	3.4	3.1	2.0	13.5	15.9	19.1	20.1
USA	1.8	2.2	1.9	2.6	3.2	2.1	1.8	2.1	8.9	8.1	7.7	7.2
Japan	-0.6	2.0	1.4	1.6	-0.3	0.0	0.2	1.8	4.6	4.3	4.3	4.2
China	9.3	7.8	8.0	8.1	5.4	:	:	:	:	:	:	:
World	4.2	3.0	3.1	3.8	:	:	:	:	:	:	:	:

GDP p.c. in PPS (EU-27=100)

Source: Statistical Office of the
Republic of Slovenia



In 2008, Slovenian GDP per
capita in PPS was 9% below
that of the EU-27 average,
in 2011 it was 16% below.

	2008
Luxembourg	279
Netherlands	134
Ireland	133
Denmark	125
Austria	124
Sweden	124
Belgium	116
Germany	116
Finland	119
United Kingdom	112
France	107
Italy	104
Spain	104
Cyprus	99
Greece	92
Slovenia	91
Malta	79
Portugal	78
Czech Republic	81
Slovakia	73
Hungary	64
Estonia	69
Poland	56
Lithuania	61
Latvia	56
Romania	47
Bulgaria	44
Iceland	124
Croatia	64
Turkey	47
Montenegro	43
Macedonia	34
Norway	192
Switzerland	143

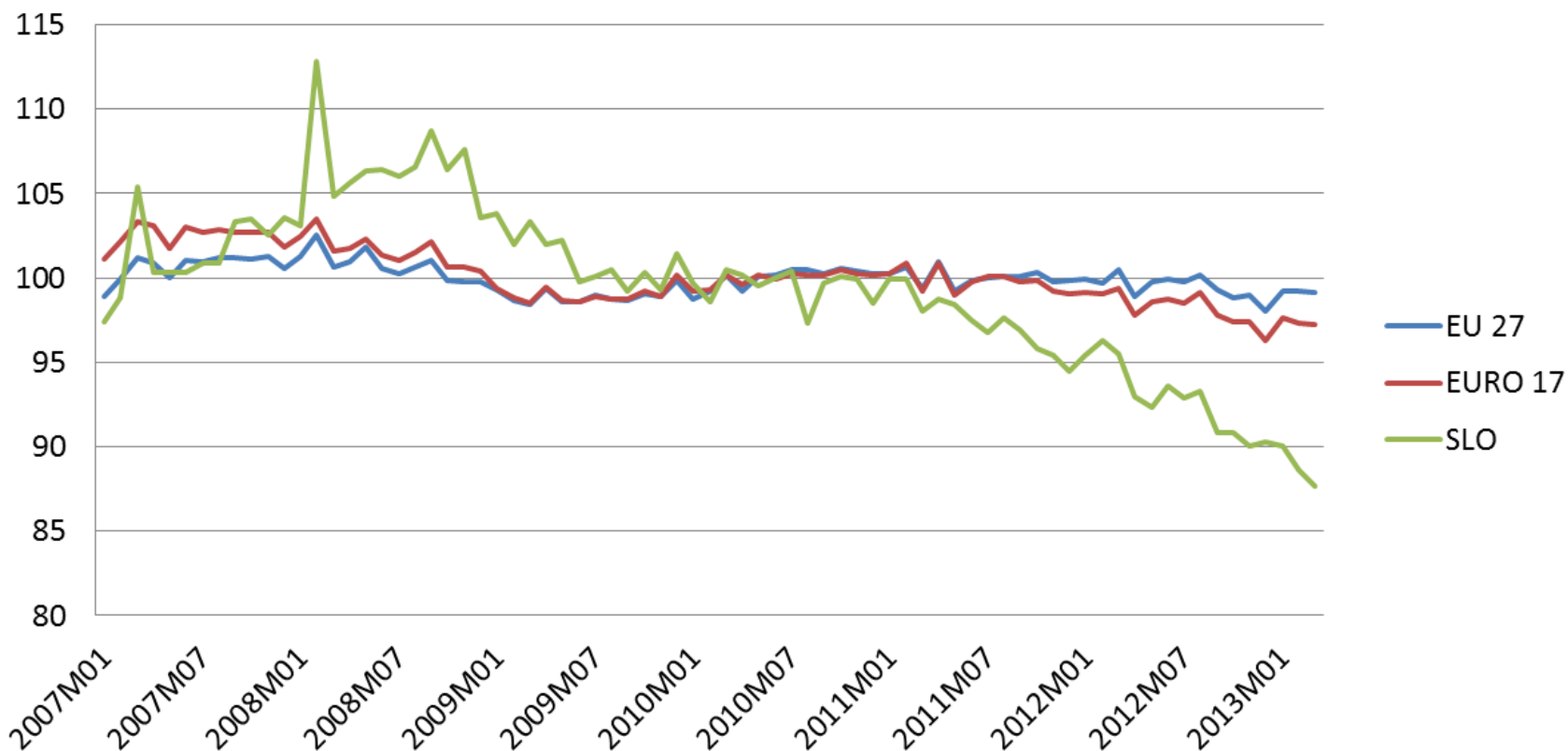
	2011
Luxembourg	271
Netherlands	131
Ireland	129
Austria	129
Sweden	127
Denmark	125
Germany	121
Belgium	119
Finland	114
United Kingdom	109
France	108
Italy	100
Spain	98
Cyprus	94
Malta	85
Slovenia	84
Czech Republic	80
Greece	79
Portugal	77
Slovakia	73
Estonia	67
Lithuania	66
Hungary	66
Poland	64
Latvia	58
Romania	49
Bulgaria	46
Croatia	61
Norway	186
Switzerland	157
Iceland	111
Turkey	52





Index of deflated turnover in retail trade, except of motor vehicles, motorcycles and fuel, Jan 07 - Mar 13

2010=100, seasonally adjusted



Source: Eurostat



Volume indices of turnover in retail trade (working day adjusted data)

	Jan 13 - Feb 13/ Jan 08 - Feb 08
Retail trade	91,0
Retail trade, except fuel	84,9
Automotive fuel in specialised stores	103,0
Food, beverages and tobacco	89,6
Non-specialised stores, predominantly with food	90,2
Food, beverages, tobacco in specialised stores	69,1
Retail trade with non-food, except fuel	81,9
Non-specialised stores, predominantly with non-food	86,0
Pharmaceutical, medical, cosmetic and toilet products in specialised stores	104,6
Textiles, clothing, footwear and leather products in specialised stores	106,5
Furniture, household equipment, construction material, audio and video equipment in specialised stores	56,9
Computers, telecommunications equipment, books, sport equipment, toys, etc. in specialised stores	77,6
Retail sale via mail order houses or via Internet	58,0
Wholesale and retail trade and repair of motor vehicles and motorcycles	81,7
Motor vehicles, motorcycles, spare parts and accessories	82,2
Maintenance and repair of motor vehicles	83,6
Total retail trade and wholesale, retail trade, repair of motor vehicles and motorcycles	89,4
Retail trade of furniture and construction material in specialised stores	45,6
Retail trade of household equipment, audio and video equipment in specialised stores	81,2

Source: Statistical Office of the Republic of Slovenia

This project has been funded with financial support from the European Union. This publication reflects the views only of the author, and the Commission cannot be held responsible for any use which may be made of the information contained therein.



Table 1: Volume indices of retail trade turnover, Slovenia, March 2013

	<u>III 2013</u> <u>II 2013</u>	<u>III 2013</u> <u>III 2012</u>	<u>I-III 2013</u> <u>I-III 2012</u>
Total retail trade¹⁾	97.4	92.3	94.1
Total retail trade except automotive fuel	99.0	91.9	92.8
Food, beverages, tobacco	100.9	96.1	95.8
Non-food (except automotive fuel)	98.2	88.4	91.5

1) In the total retail trade aggregate are included sale of food, beverages, tobacco, sale of non-food products (except automotive fuel) and sale of automotive fuel.

Source: SURS

Table 2: Volume indices of turnover in wholesale, retail trade and repair of motor vehicles and motorcycles, Slovenia, March 2013

	<u>III 2013</u> <u>II 2013</u>	<u>III 2013</u> <u>III 2012</u>	<u>I-III 2013</u> <u>I-III 2012</u>
Wholesale, retail trade and repair of motor vehicles and motorcycles	100.7	94.3	93.3

Source: SURS

Turnover from the sale of goods by commodity
groups in retail trade, 1000 EUR, Slovenia

(Source: Statistical Office of the Republic of Slovenia)



	2011	%
Commodity groups - TOTAL	12.343.174	
1 Food, beverages and tobacco	3.306.681	26,8
1.1 Food	2.142.537	17,4
1.2 Beverages	698.596	5,7
1.3 Tobacco	465.548	3,8
2 Non-food products	5.238.563	42,4
2.1 Clothing and footwear	880.939	7,1
2.2 Furniture, lights, carpets and other floor coverings	228.944	1,9
2.3 Products for household and home	185.439	1,5
2.4 Household appliances in electric appliances for personal care	166.930	1,4
2.5 Computer, telecommunication, audio, visual devices	294.436	2,4
2.6 Newspapers, books and stationery materials	184.463	1,5
2.7 Sports equipment	132.556	1,1
2.8 Games and toys	65.693	0,5
2.9 Garden equipment, gardens, plants, flowers, pets	239.512	1,9
2.10 Medical products, appliances and equipment	675.440	5,5
2.11 Cosmetics and toilet accessories	360.031	2,9
2.12 Personal effects	97.512	0,8
2.13 Building and installation materials	368.081	3,0
2.14 Products for minor maintenance and repair of the dwelling	195.849	1,6
2.15 Tools and equipment for house and garden	241.540	2,0
2.16 Non-durable household goods	165.624	1,3
2.17 Heating oil, solid fuels, gas	377.513	3,1
2.18 Other	378.064	3,1
3 Fuels	2.091.284	16,9
4 Motor vehicles	1.706.646	13,8



Persons in employment by activities, december 2012

	Persons in employment	%
Activities - TOTAL	792.948	100,0
C MANUFACTURING	178.372	22,5
G WHOLESALE AND RETAIL TRADE, REPAIR OF MOTOR VEHICLES AND MOTORCYCLES	106.362	13,4
P EDUCATION	65.279	8,2
Q HUMAN HEALTH AND SOCIAL WORK ACTIVITIES	55.331	7,0
F CONSTRUCTION	53.494	6,7
O PUBLIC ADMINISTRATION AND DEFENCE, COMPULSORY SOCIAL SECURITY	49.635	6,3
M PROFESSIONAL, SCIENTIFIC AND TECHNICAL ACTIVITIES	47.576	6,0
H TRANSPORTATION AND STORAGE	45.452	5,7
A AGRICULTURE, FORESTRY AND FISHING	37.393	4,7
I ACCOMMODATION AND FOOD SERVICE ACTIVITIES	31.397	4,0
N ADMINISTRATIVE AND SUPPORT SERVICE ACTIVITIES	25.342	3,2
J INFORMATION AND COMMUNICATION	22.987	2,9
K FINANCIAL AND INSURANCE ACTIVITIES	22.931	2,9
R ARTS, ENTERTAINMENT AND RECREATION	13.703	1,7
S OTHER SERVICE ACTIVITIES	13.212	1,7
E WATER SUPPLY, SEWERAGE, WASTE MANAGEMENT AND REMEDIATION ACTIVITIES	9.469	1,2
D ELECTRICITY, GAS, STEAM AND AIR CONDITIONING SUPPLY	7.849	1,0
L REAL ESTATE ACTIVITIES	3.983	0,5
B MINING AND QUARRYING	2.682	0,3
T ACTIVITIES OF HOUSEHOLDS AS EMPLOYERS; PRODUCING ACTIVITIES OF HOUSEHOLDS FOR OWNED USE	499	0,1

Persons in employment by activities, Slovenia

Activities - TOTAL	2008M12	%	2012M12	%	Index 12/08
Persons in employment	880.252	100	792.948	100	90
Persons in paid employment	790.231	90	699.898	88	89
Self employed persons	90.021	10	93.050	12	103

TRADE	2008M12	%	2012M12	%	Index 12/08
Persons in employment	116.878	100	106.362	100	91
Persons in paid employment	109.330	94	98.149	92	90
Self employed persons	7.548	6	8.213	8	109

Source: Statistical office of the Republic of Slovenia

Source: Statistical Office of the Republic of Slovenia



Persons in employment (without farmers) by educational attainment, by activity, 31. 12. 2011, SLO

		Total		basic or less (%)	upper secondary (%)	tertiary (%)
2008		847.067		18,6	57,6	23,5
2009		812.315		15,4	58,9	25,5
2010		790.967		14,3	58,7	26,9
2011		784.177		13,1	58,1	28,8
	SKUPAJ	784.177				
A	Agriculture,forestry and fishing	4.902	N	30,1	G 75,1	P 66,0
B	Mining and quarrying	2.773	A	27,5	H 73,9	O 56,4
C	Manufacturing	185.012	F	27,0	I 71,2	M 55,4
D	Electricity,gas,steam,air cond.supply	7.892	E	24,3	S 70,8	K 51,7
E	Water supply;sewer.,wst.manag.,remed.act.	9.561	T	23,9	B 70,7	J 49,7
F	Construction	62.057	C	21,2	F 65,2	R 46,8
G	Wholesale,retail;repair of mot.vehicles	109.155	I	19,5	C 64,1	Q 40,9
H	Transportation and storage	46.508	H	13,7	A 58,3	D 39,2
I	Accommodation and food ser.activities	32.307	B	12,4	T 58,1	L 38,0
J	Information and communication	22.708	Q	8,4	E 57,9	S 21,5
K	Financial and insurance activities	23.785	L	8,1	N 57,4	G 18,6
L	Real estate activities	3.990	S	7,7	D 56,1	T 18,0
M	Professional,scientific,technical act.	48.204	R	6,9	L 53,9	E 17,8
N	Administrative and support service act.	26.160	G	6,3	Q 50,7	B 16,9
O	Public admin,defence;compulsory soc.sec.	51.192	P	5,5	J 47,9	C 14,8
P	Education	65.473	M	4,8	K 47,3	A 14,2
Q	Human health and social work activities	54.777	D	4,7	R 46,3	N 12,6
R	Arts,entertainment and recreation	13.909	J	2,4	O 41,6	H 12,4
S	Other service activities	13.246	O	2,0	M 39,8	I 9,3
T	Act.of hhold.as employers;producing act.of hhold for own use	566	K	1,1	P 28,4	F 7,7

Source: SURS



Persons in employment by activity (NACE Rev. 2), 5-year age groups and sex, Slovenia, 2011

Activities - TOTAL	Age - TOTAL	15-19 years	20-24 years	25-29 years	30-34 years	35-39 years	40-44 years	45-49 years	50-54 years	55-59 years	60-64 years	65 years and over
Sex - TOTAL	817.311	0,2	3,7	11,2	15,5	15,7	15,2	15,9	13,7	7,5	1,3	0,2
Men	452.062	0,3	4,5	11,4	15,2	15,1	14,4	14,9	13,1	8,9	1,9	0,3
Women	365.249	0,1	2,7	10,9	15,8	16,3	16,1	17,1	14,4	5,7	0,6	0,1
G - Trade	Age - TOTAL	15-19 years	20-24 years	25-29 years	30-34 years	35-39 years	40-44 years	45-49 years	50-54 years	55-59 years	60-64 years	65 years and over
Sex - TOTAL	109.157	0,2	4,4	13,6	18,2	17,5	14,2	14,4	11,5	5,3	0,6	0,1
Men	52.429	0,3	5,3	13,3	18,0	17,3	13,8	13,2	10,4	7,2	1,1	0,1
Women	56.728	0,1	3,5	13,9	18,5	17,6	14,6	15,6	12,5	3,5	0,2	0,0

Source: Statistical Office of the Republic of Slovenia.

Registered unemployed persons Jan 08 – Jan 13

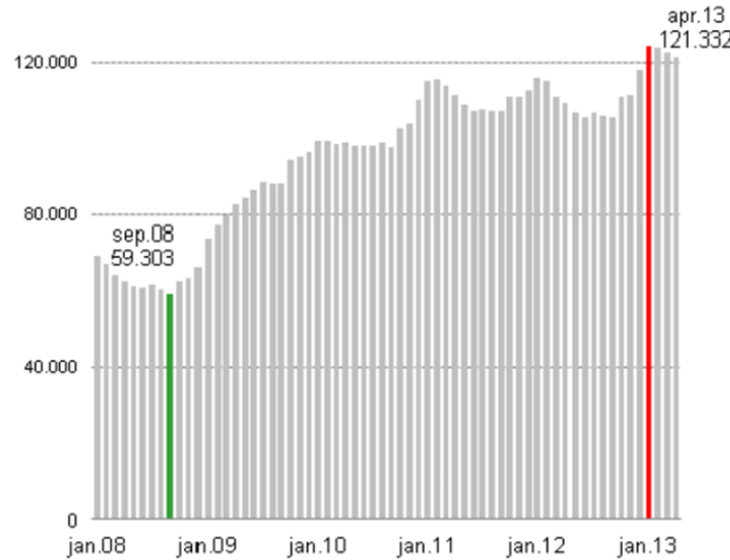
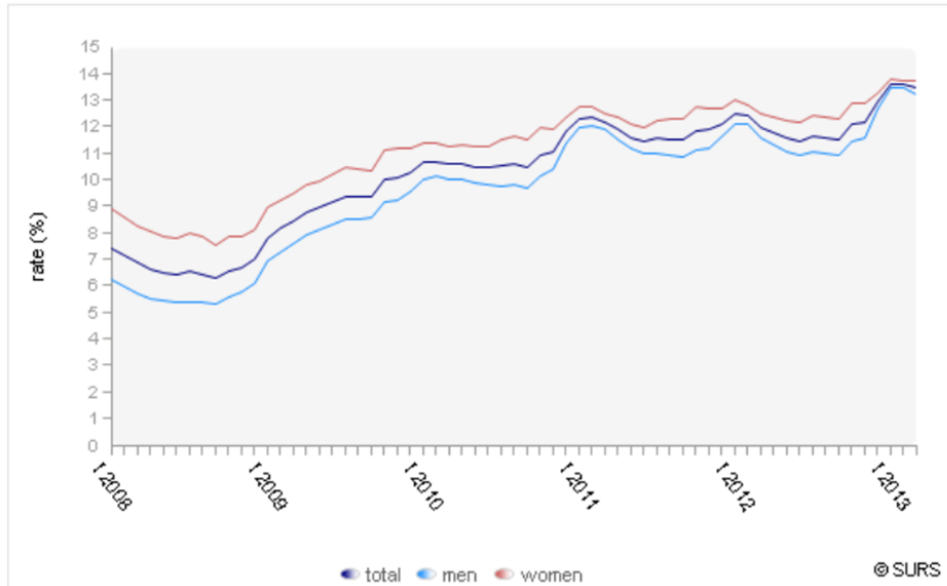


Table: Comparison of registered unemployment rates and ILO unemployment rates

	2012			
	I-III	IV-VI	VII-IX	X-XII
	%	%	%	%
Register data				
Total	12.3	11.6	11.6	12.4
Men	11.9	11.1	11.0	11.9
Women	12.7	12.3	12.3	13.0
Survey data				
Total	8.6	8.2	9.2	9.6
Men	8.4	7.7	8.5	9.1
Women	8.8	8.8	10.0	10.1

... no data
Source: SURS

Chart 1: The registered unemployment rate by sex, Slovenia, January 2008 - March 2013





Registered unemployed persons by age groups,
april 2013

Age (years)	number	%
< 17 years	140	0
18 - 24	10.664	9
25 - 29	17.813	15
30 - 39	28.202	23
40 - 49	24.435	20
50 - 59	36.586	30
> 60	3.492	3
TOTAL	121.332	100

Registered unemployed persons by educational attainment,
april 2013

Education	number	%
I	35.103	29
II	5.793	5
III	948	1
IV	29.467	24
V	32.185	27
VI	4.942	4
VII+VIII	11.730	10
bologna prog.	1.164	1
TOTAL	121.332	100

Registered unemployed persons by
duration of unemployment, april 2013

Duration	number	%
< 2 months	19.282	16
3 - 5 months	24.886	21
6 - 8 months	14.704	12
9 - 11 months	7.907	7
12 - 23 months	20.985	17
24 - 35 months	11.571	10
3 - 4 years	12.620	10
5 - 7 years	5.087	4
> 8 years	4.290	4
TOTAL	121.332	100

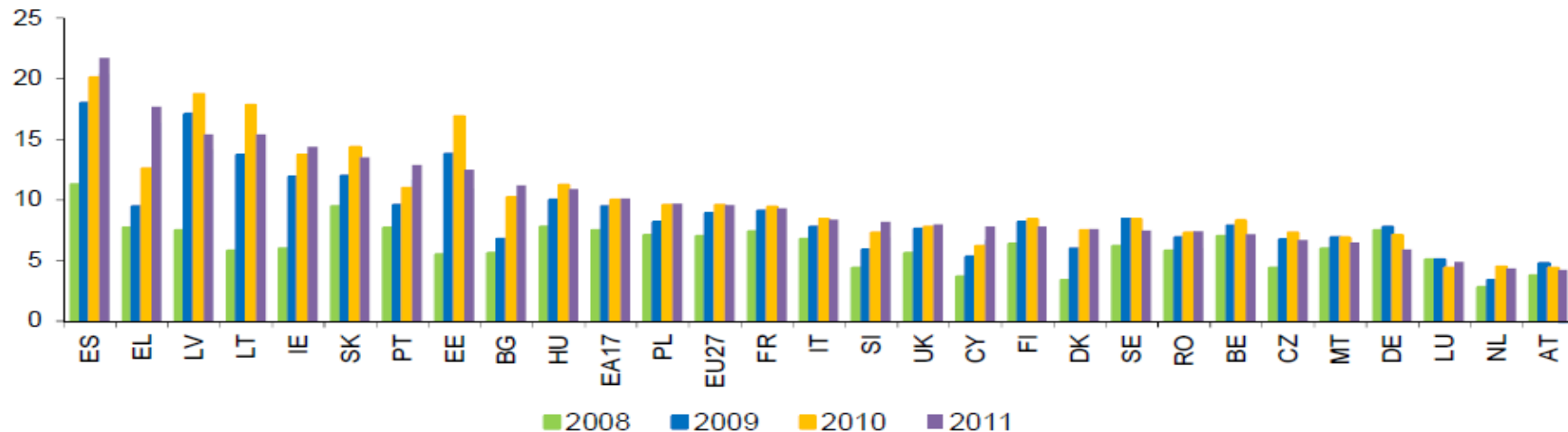
Work experience of registered unemployed persons, 31. 12.

	2005	2007	2008	2009	2010	2011
TOTAL	92.575	68.411	66.239	96.672	110.021	112.754
	100%	100%	100%	100%	100%	100%
Without work experience	27	22	19	17	16	16
Less than 1 year	7	7	7	7	6	6
1 to less than 2 years	5	5	5	6	5	5
2 to less than 3 years	3	3	4	4	4	4
3 to less than 5 years	5	5	5	6	6	6
5 to less than 10 years	9	9	9	10	10	10
10 to less than 20 years	15	15	15	15	15	15
20 to less than 30 years	16	17	18	18	16	17
30 years or more	12	17	17	17	22	20

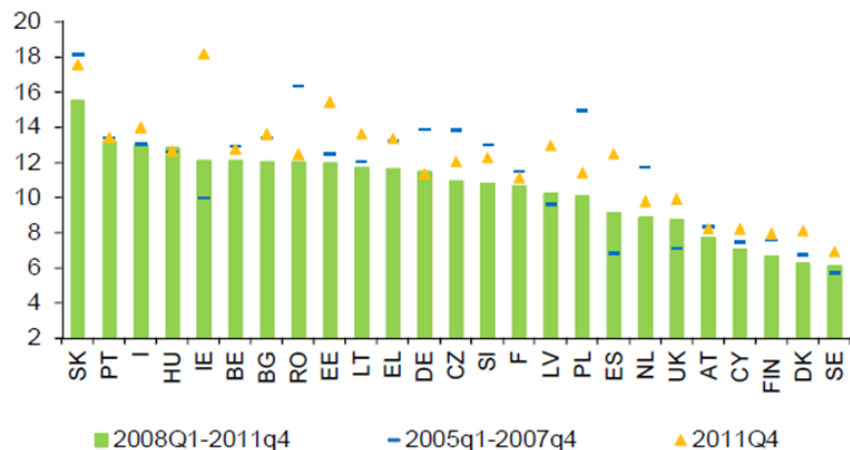
Source: Employment Service of Slovenia



Unemployment rates in the EU Member States: 2008-2011 (15-74 years, as % of labour force) Source: EC, Labour Market Developments in Europe 2012

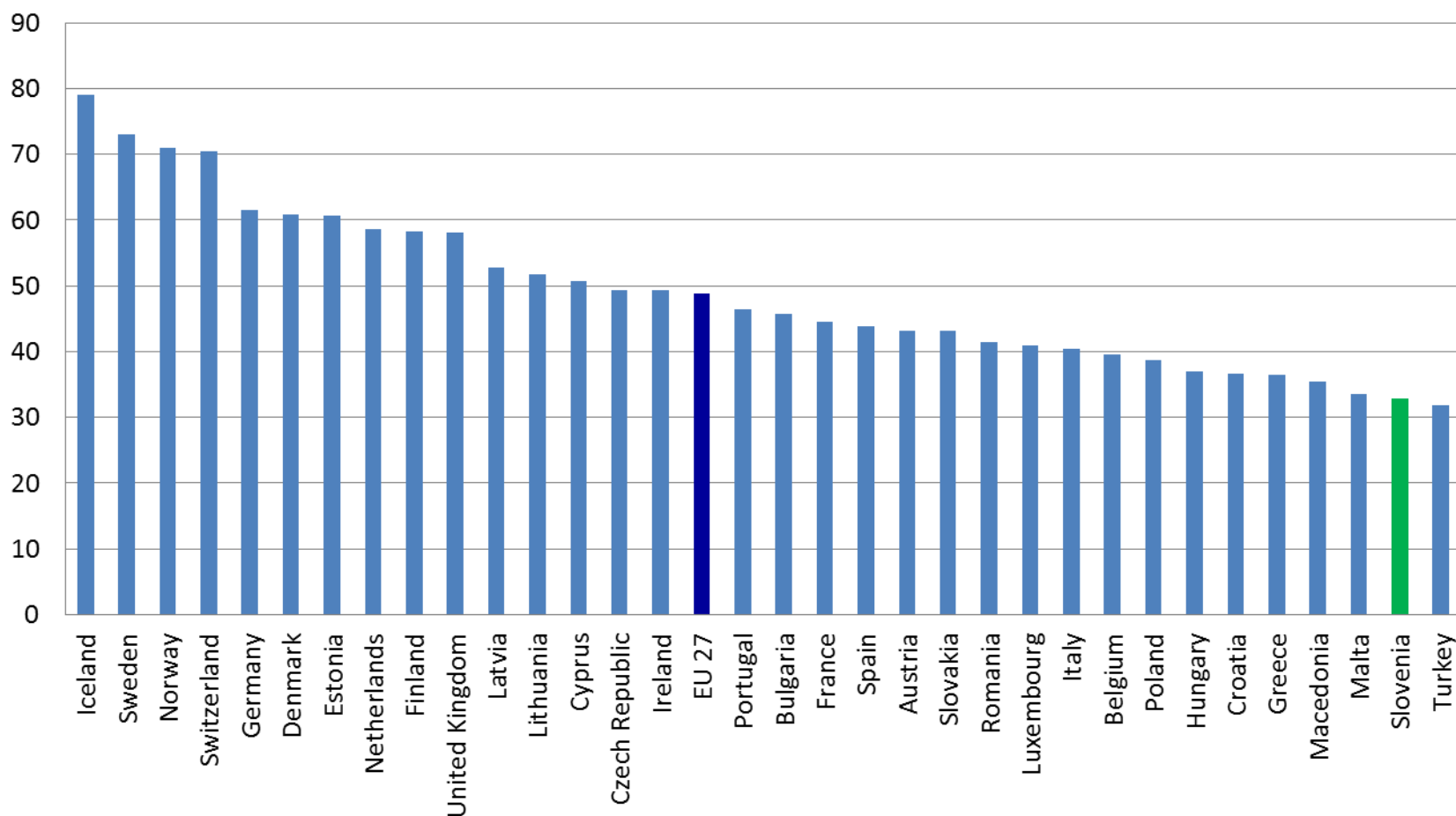


Unemployment duration in months





Employment rates (55 to 64 years), 2012



Source: Eurostat

Average number of insured persons of compulsory insurance and pensioners and Contributors/pensioners ratio

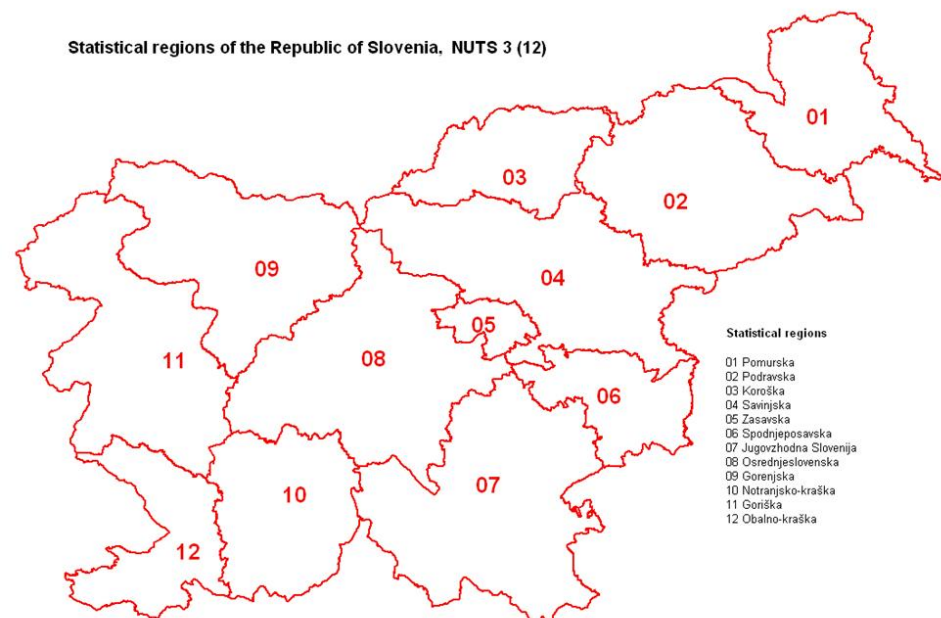
(Source: The Institute of pension and invalidity insurance of Slovenia)



Year	Insured persons of compulsory insurance	Pensioners	Contributors/pensioners ratio
1	2	3	4=2:3
1990	884.615	356.274	2,48
1991	816.932	393.200	2,08
1992	764.902	419.805	1,82
1993	782.570	430.291	1,82
1994	772.549	432.915	1,78
1995	768.961	437.051	1,76
1996	765.731	442.105	1,73
1997	783.196	448.753	1,75
1998	784.193	454.626	1,72
1999	800.467	460.280	1,74
2000	839.381	467.448	1,80
2001	841.478	474.507	1,77
2002	836.544	483.898	1,73
2003	834.049	491.911	1,70
2004	836.669	497.826	1,68
2005	843.251	504.988	1,67
2006	854.606	510.795	1,67
2007	879.090	518.805	1,69
2008	904.084	527.933	1,71
2009	894.886	538.455	1,66
2010	881.992	552.561	1,60
2011	869.869	569.951	1,53



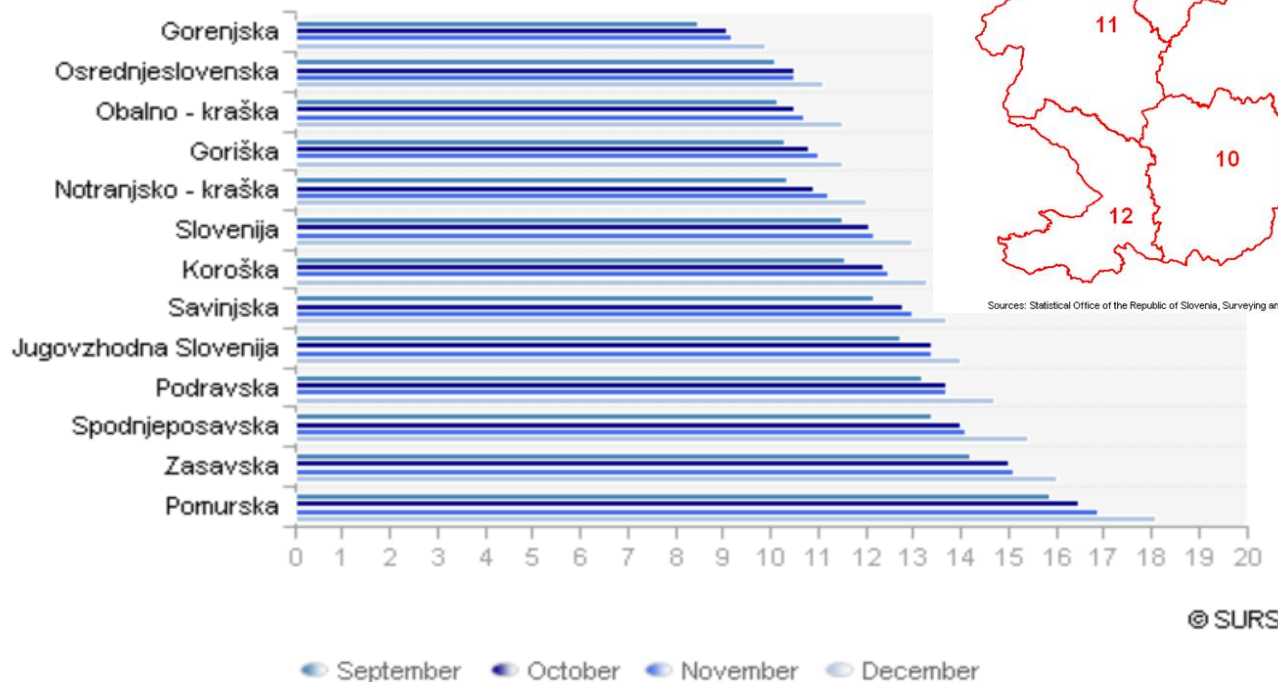
Statistical regions of the Republic of Slovenia, NUTS 3 (12)



- Statistical regions**
- 01 Pomurska
 - 02 Podravska
 - 03 Koroška
 - 04 Savinjska
 - 05 Zasavska
 - 06 Spodnjeposavska
 - 07 Jugovzhodna Slovenija
 - 08 Osrednjeslovenska
 - 09 Goriška
 - 10 Notranjsko-kraška
 - 11 Goriška
 - 12 Obalno-kraška

Sources: Statistical Office of the Republic of Slovenia, Surveying and Mapping Authority of the Republic of Slovenia

The registered unemployment by statistical regions, September 2012 – December 2012



© SURS

● September ● October ● November ● December

Source: SURS



Thank you for your attention.